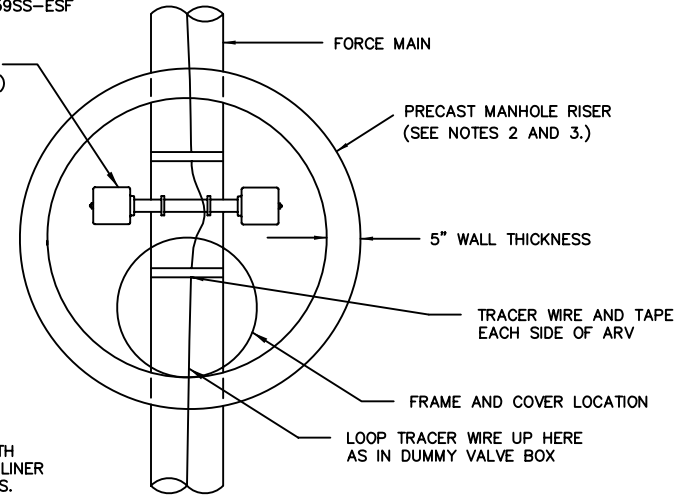


GOLDEN ANDERSON FIG. 959SS-ESF
AIR VACUUM VALVE AND
AIR RELEASE VALVE WITH
FLUSHING ATTACHMENTS
(BALL VALVES NOT SHOWN)



NOTES:

1. COAT INTERIOR OF MANHOLE WITH RAVEN EPOXY 405 PROTECTIVE LINER AT 120 MILS MINIMUM THICKNESS.
2. USE 32" RISER FOR FORCE MAINS 12" OR SMALLER. USE 48" RISER FOR FORCE MAINS UP TO 42".
3. USE 4" DIAMETER RISER FOR FORCE MAINS UP TO 12". USE 5" DIAMETER RISER FOR FORCE MAINS UP TO 24". RISER DIAMETERS FOR LARGER FORCE MAINS WILL BE CASE-BY-CASE.
4. TAPPING SADDLE TO BE I.P. THREAD AND 304 MINIMUM STAINLESS STEEL STRAPS. USE FORD #FC 202, MUELLER #DR2S, JCM #406, ROMAC #202N, OR SMITH-BLAIR #317 FLEXI-BLUE.

AIR RELEASE VALVE AND VAULT
FOR FORCE MAINS

CHARLESTON WATER SYSTEM

AIR RELEASE VALVE AND VAULT
FOR FORCE MAINS

APPROVED BY: CWS	DATE: MAR 2000	DRAWING NO. 69
SCALE: NTS	REVISED: FEB 2010	